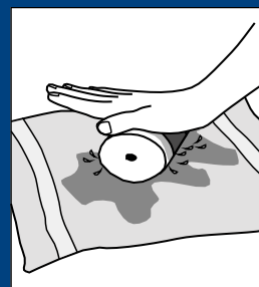
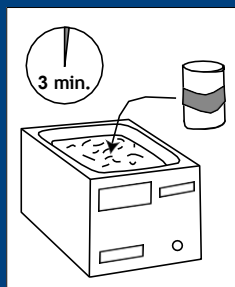
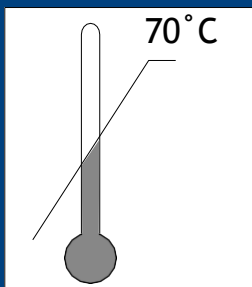


Vet-LITETM

General Instructions

Heat in water

- Vet-LITE should be heated in a water bath set at 70°C. Alternatively use a bowl with hot water or an Oven at 80°C.
- Sheets should be immersed in the water for approximately 1 minute and the rolls approximately 3 minutes. Immerse the material into the water. Make sure the water penetrates the rolls.
- Always ensure that the material is properly heated before you start working.
- Use tongs to remove Vet-LITE from the water bath and allow excess water to drain from the material.
- Avoid direct contact with the skin to avoid scalding from the hot water.
- The material will not become warm, but ensure all water is drained before applying on the patient.
- Protect and cover any wounds or scarring with appropriate dressings.
- Apply stockinette and proceed with undercover padding to protect the skin before applying the Vet-LITE material. Layers of undercover padding must be thoroughly assessed in each case and any

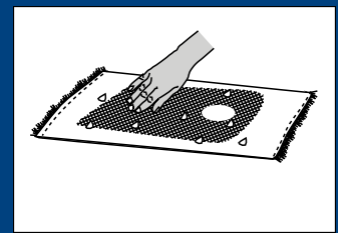
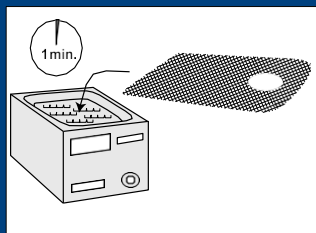
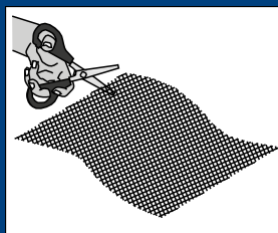
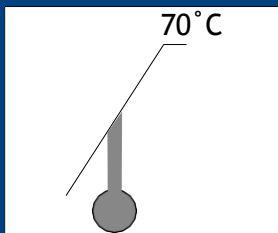


Casting

- Assess number of rolls needed for appropriate strength. Place all the rolls in the water bath.
- As a basic rule apply the material with 50% overlap and if more rigidity is needed in certain areas simply add extra layers.
- Always assess the size and weight of the animal for the correct number of layers.
- Vet-LITE rolls have a plastic separator between the layers. This separator ensures that the layers do not stick together as the material is heated in the water bath.
- The plastic separator is continuously removed during the circular cast process. Pulling the separator with one hand advances the roll.
- When multiple layers of Vet-LITE are required, you should ensure the material is slightly warm and tacky to achieve full adhesion. Pull the material slightly when you cast for the best result.
- The extent to which Vet-LITE can be molded is high, and care must be taken to avoid creating folds—sources of local pressure that can hinder blood circulation. To minimize folds in the material, the material can be rotated to change direction over flexed joints.
- Make sure to smooth the layers during the process to ensure a uniform, well-fitted and correctly laminated cast.
- While the material is still warm, roll or smooth all edges. Cut the stockinette and padding 5 cm longer at all openings and fold it around the cast to form a soft, clean, finished edge.

Splinting

- Assess number of layers needed for appropriate strength.
- Cats approx. 1-2 layers
- Dogs approx. 2-4 layers
- Always assess the size and weight of the animal for the correct number of layers. It is possible to cut smaller pieces as reinforcements in areas of the splint needing more rigidity.
- Once material is heated and softened place the splint on the table and gently press the layers together for a permanent lamination. You can also cut the desired shape of the splint and roll the edges while material is still soft. Before applying the splint on the animal, reheat it for optimal working time.
- Cut the stockinette and padding 5 cm longer at all openings and fold it around the splint to form a soft, clean, finished edge.
- Secure the splint with appropriate wrapping or velcro straps.



IMPORTANT

The Veterinarian should always pay attention to swelling or other complications! Uneven distribution of pressure or wrapping the limb too tight can cause swelling. Common complications include rub sores, pressure sores, dermatitis and swelling of surrounding tissues due to improper placement of the cast or splint. External coaptation should not be applied until swelling has subsided.

TIPS

- Vet-LITE can be re-heated and re-shaped any number of times for the same animal.
- Make small changes by spot heating a completed cast or splint with a regular hairdryer. Always keep your own hand close to the area you heat to avoid burning the animal.
- Cool the splint or cast with cold packs or ice spray for faster setting.

Removing the cast

Vet-LITE can be removed with ordinary cast instruments such as cast cutting saw or sharp cast cutting scissors. Vet-LITE emits no harmful residue during the removal process. Extraction ventilation is not necessary in the room or at the cast cutter saw.



Use of the stirrup is optional. Can also be made from the Vet-LITE material.



ORDER INFORMATION

VET-LITE ROLLS			
Item No	Color	Size	Units
902	White	5 cm x 180 cm	20/pkg
903	White	7.5 cm x 180 cm	20/pkg
904	White	10 cm x 180 cm	10/pkg
906	White	15 cm x 180 cm	10pkg
903R	Royal Blue	7,5 cm x 180 cm	5/pkg
904R	Royal Blue	10 cm x 180 cm	5/pkg
906R	Royal Blue	15 cm x 180 cm	5/pkg
VET-LITE SHEETS			
Item No	Color	Size	Units
990	White	20 cm x 37.5 cm	15 sheets
993	White	7.5 cm x 37.5 cm	15 sheets
994	White	10 cm x 37.5 cm	15 sheets
995	White	12.5 cm x 37.5 cm	15 sheets
996	White	15 cm x 37.5 cm	15 sheets