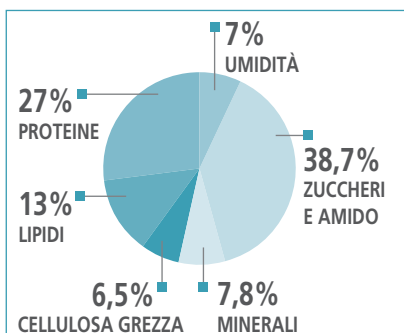




VITA IN CASA  
DA 1 A 10 ANNI  
PESO FORMA

**INDOOR 27®**

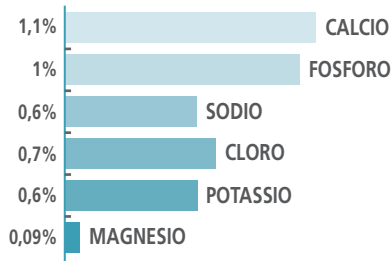
### ANALISI MEDIE



### ALTRI NUTRIENTI

AMIDO (%)	33,2
FIBRE (%)	12
ACIDO LINOLEICO (%)	3,2
ACIDO ARACHIDONICO (%)	0,07
OMEGA 6 (%)	3,3
OMEGA 3 (%)	0,6
EPA + DHA (%)	0,22

### MINERALI



### OLIGOELEMENTI (mg/Kg)

FERRO	210
RAME	23
ZINCO	210
MANGANESE	67
SELENIO	0,2
IODIO	2,5




### VITAMINE

VITAMINA A (UI/Kg)	16000
VITAMINA D3 (UI/Kg)	1200
VITAMINA E (mg/Kg)	500
VITAMINA C (mg/Kg)	200

### ALTRE VITAMINE (mg/Kg)

VITAMINA B1	15
VITAMINA B2	25
PANTOTENATO	40
VITAMINA B6	14
VITAMINA B12	0,18
NIACINA	131
BIOTINA	1
ACIDO FOLICO	2,4
COLINA	3000

### QUANTITÀ GIORNALIERE RACCOMANDATE

Peso del gatto (in Kg)	Magro 	Peso forma 	Sovrappeso 
	Alimento (g/giorno)		
2	35	30	-
3	55	45	-
4	75	60	45
5	-	70	60

### APPORTO ENERGETICO

ENERGIA (kcal/Kg)	3665
-------------------	------

### AMMINOACIDI

TAURINA (%)	0,18
L-CARNITINA (mg/Kg)	50
POLIFENOLI di UVA e TÈ VERDE (mg/Kg)	50