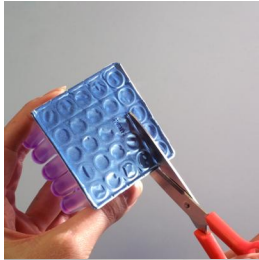


Delvotest[®] SP - NT

Delvotest[®] ampoule photo instructions



1. Cut off the required number of ampoules with a pair of scissors. Be careful not to damage the foil of the remaining ampoules.



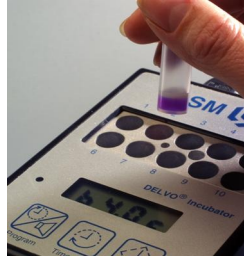
2. Open ampoule(s) by punching a hole in the aluminium foil with the syringe. Mark the ampoules for sample identification.



3. Attach a new disposable pipette to the syringe. Depress the plunger completely, dip the tip in the milk sample and allow the plunger to return slowly under pressure of the spring.



4. Empty the syringe into the correspondingly marked ampoule by slowly depressing the plunger of the syringe. Use a fresh disposable pipette for each milk sample.



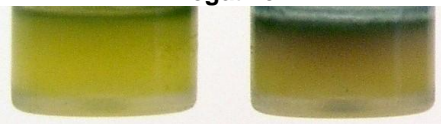
5. Check the temperature of the incubator ($64^{\circ}\text{C} \pm 0.5^{\circ}\text{C}$). Put the ampoule(s) into the incubator. Record the time and set timer for 3 hours or use control time.



6. Read the colour of the lower 2/3 part of the solid agar in the ampoule(s) after the required incubation time.

Delvotest[®] reading colours

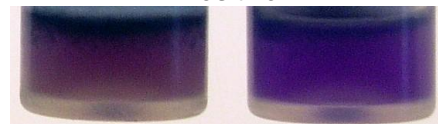
Negative



Detection limit



Positive



For more information please contact:

DSM Food Specialties B.V.
P.O. Box 1, 2600 MA Delft
The Netherlands
Tel.: +31 15 279 4001

info.dairy-ingredients@dsm.com

www.dsm-foodspecialties.com | www.delvotest.com

or our local representative:

Although diligent care has been used to ensure that the information provided herein is accurate, nothing contained herein can be construed to imply any representation or warranty as to the accuracy, currency or completeness of this information. The content of this document is subject to change without further notice. This document is non-controlled and will not be automatically replaced when changed. Please contact us for the latest version of this document or further information.